

SOLIDBAC PINK-EYE IR/PR

- Easy one-step vaccination against pink-eye
- Season-long pinkeye protection
- Prevention as opposed to treatment
- Less labor
- Reduced animal stress
- SQ administration

INSIDE THIS ISSUE:

Grass Tetany 2

Feeding Show Pigs 2

Pfizer Rewards 2



1-800-658-3629

JUNE 2009

NEW!! SolidBac Pinkeye IR/PR

SolidBac Pinkeye IR/PR

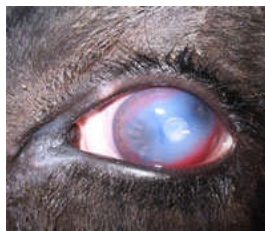
makes vaccination against pink-eye caused by *Moraxella bovis* an easy, one-step process. **SolidBacPinkeye IR/PR** combines two, tiny antigen pellets—an Immediate Release (IR) pellet and a Programmed Release (PR) pellet—and delivers them simultaneously using the SoliDoser applicator.

For the best protection, vaccinate in the spring prior to the beginning of the fly season. The patented technology helps provide protection with the Immediate Release (IR) antigen pellet which is boosted automatically by the Programmed Release (PR) antigen pellet. The result is solid, season-long pinkeye protection with just one administration.

Broad-Spectrum Protection

Contains 8 different isolates of the pinkeye causing *Moraxella bovis* bacteria which demonstrated in a recent challenge study to:

- Help prevent pinkeye in more than 90% of vaccinates
- Aid in reducing pinkeye damage by more than 96%, 6 days post-challenge



Stage 2 pinkeye

Advantages

- Aids in the prevention and control of pinkeye (infectious bovine keratoconjunctivitis) caused by *Moraxella bovis* with just one application
- Initial and booster doses are administered at the same time, resulting in less labor and reduced animal stress
- No waste: Doses are pre-measured
- No mixing or spillage: Comes ready-to-use
- Flexible injection site locations: Subcutaneous in the base of the ear or in the neck

Monthly Specials!

- **Architect 12-6 Beef Hi-Mag Mineral** SAVE \$40 per ton or \$1.00 per bag (please call ahead for large orders).
- **Architect 12-12 Beef or Breeder IGR Mineral** SAVE \$40 per ton or \$1.00 per bag (please call ahead for large orders).
- **OLS Hi-Mag Lick Tubs** SAVE \$5 per tub (while supplies last).
- **SAVE 10% on Gallagher Fencing Supplies**
- **Atroban—Quarts for \$23.00**



Grass Tetany



Hypomagnesemia, otherwise known around here as “Grass Tetany, is highly fatal magnesium deficiency affecting ruminants. We typically see issues with grass tetany in the spring when lactating cattle are grazing lush spring growth. With heavier milking cows being more susceptible. While this is a preventable disease it still kills 1-3% of cattle, goats and sheep annually.

Usually producers are not blessed with symptomatic

cattle rather they just find dead cattle. When observed more closely producers may see cattle staggering, ear twitching, tremors, appear thin and may separate themselves from the rest of the herd

Death occurs from respiratory failure during one of the violent seizures, and often die within 30 to 60 minutes of starting to seize. **When handling animals with these symptoms avoid the mouth area as these sym-**

toms may also be due to rabies. Call your vet immediately.

Grass Tetany can easily be prevented by providing a high magnesium mineral two weeks prior to pasture turnout though June. Magnesium has a bitter taste and time is needed to acclimate cattle to the taste to ensure adequate intakes prior to turnout. Talk to your Sioux Nation Field Marketer about feeding our **Breeder 12-6 Hi-Mag Mineral.**

“.....contact your Sioux Nation Field Marketer and talk to them about Purple Pursuit show feed.....”

Feeding Show Pigs by Robert Fischer, PhD Nutritionist

Water is the most important nutrient for the pig. Make sure the pigs have adequate access to fresh, clean water at all times. Provide rations to your pigs based on body weight that will supply the correct concentration of protein/amino acids to maximize lean muscle growth throughout the feeding period. Another major nutrient in the diet is metabolizable energy (ME). The ME in the ration comes from carbohydrates in corn and soybean meal and the addition of fat to the

ration in the form of choice white grease for example. Energy is a vital component of the diet as it is needed to eat, sleep, breath, all other daily functions, and most importantly it is needed for muscle deposition. The proper use of ME depends on the concentration of other components of the ration, especially protein. Depending on the pig, fat concentrations should range from 6.5 percent in growing pigs to 3.5 percent in finishing pigs. Make sure rations are well fortified with minerals

and vitamins, as they are critical in the development of bone, muscle tissue, and the immune system. If you have any questions about the nutritional needs of your show pigs please contact your Sioux Nation Ag Center Field Marketer and talk to them about “Purple Pursuit” show feed. Purple Pursuit show feed combined with high quality animals will provide you the opportunity to stand in the winner’s circle.

Pfizer Rewards Program



If you have bought any Pfizer Animal Health cattle vaccine, dewormer or select Anti-infective in the last couple of months you have earned points!

All purchases made between February 1

2009 through May 31 2009 qualify.

Purchased products earn points which can be redeemed for pocket knives, fencing pliers, hats and jackets.

Talk to your Sioux Nation Field Marketer and ask for the 2009 Beef Portfolio Rewards

Program Redemption Form.

All forms and applicable invoices must be **RECEIVED** by Pfizer by June 30, 2009 to qualify.

Pfizer Animal Health reserves the right to modify or discontinue this program at any time for any reason.